

FILATI

No. 5/20 EUR 3,00  
www.lanagrossa.com

# GOMITOLO



MODE  
MIT  
WOLLE





1-GOMITOLO  
SUMMER TWEED



2  
GOMITOLO  
SUMMER  
TWEED



3  
GOMITOLO  
ALOHA



4  
GOMITOLO  
DENIM INCA





5  
GOMITOLO  
DENIM INCA



6  
GOMITOLO  
DENIM



7  
GOMITOLO  
SUMMER TWEED





8  
GOMITOLO  
DOPPIO



9  
GOMITOLO  
DENIM



10  
GOMITOLO  
SUMMER TWEED

Beginn Anleitungen

















Ende Anleitungen



11  
GOMITOLO  
ALOHA





12  
GOMITOLO  
DOPPIO



← 13 + 14 →  
GOMITOLO  
ALOHA





15  
GOMITOLO  
DOPPIO



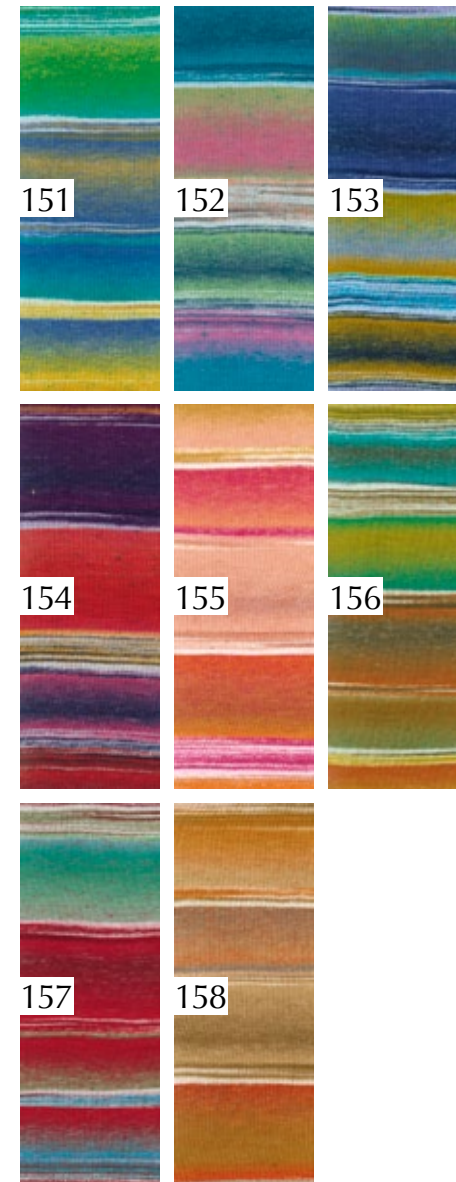
← 16 →  
GOMITOLO  
ALOHA





Gomitolo Denim Inca **nieuw**

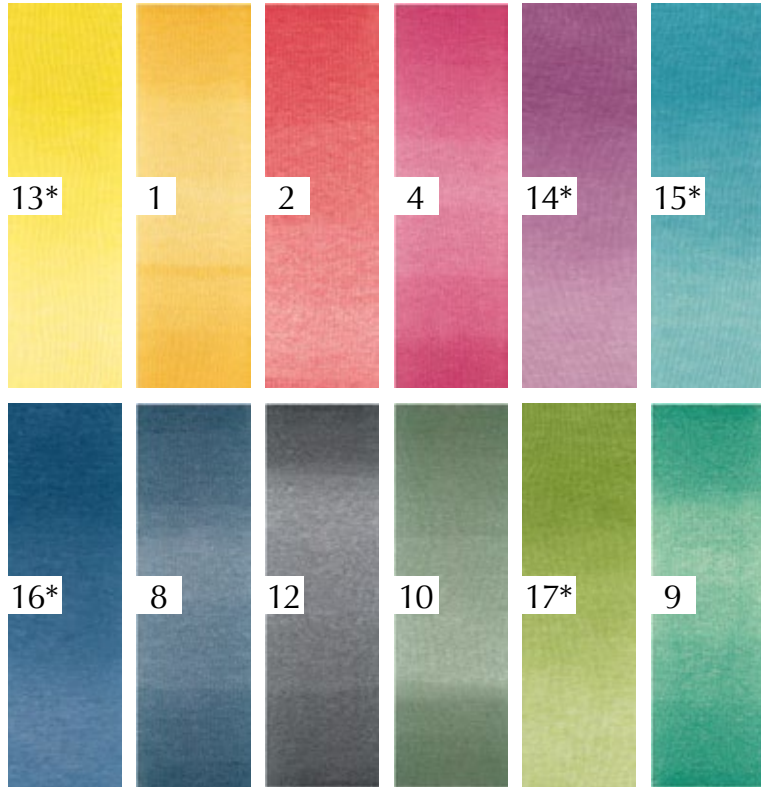
ca. 740 m / 200 g  
 X 3,5-4 mm  
 80 % katoen +  
 20 % polyamide



17  
 GOMITOLO  
 DENIM INCA

## Gomitolo Denim

ca. 740 m / 200 g  
 X 3,5-4 mm  
 80 % katoen +  
 20 % polyamide

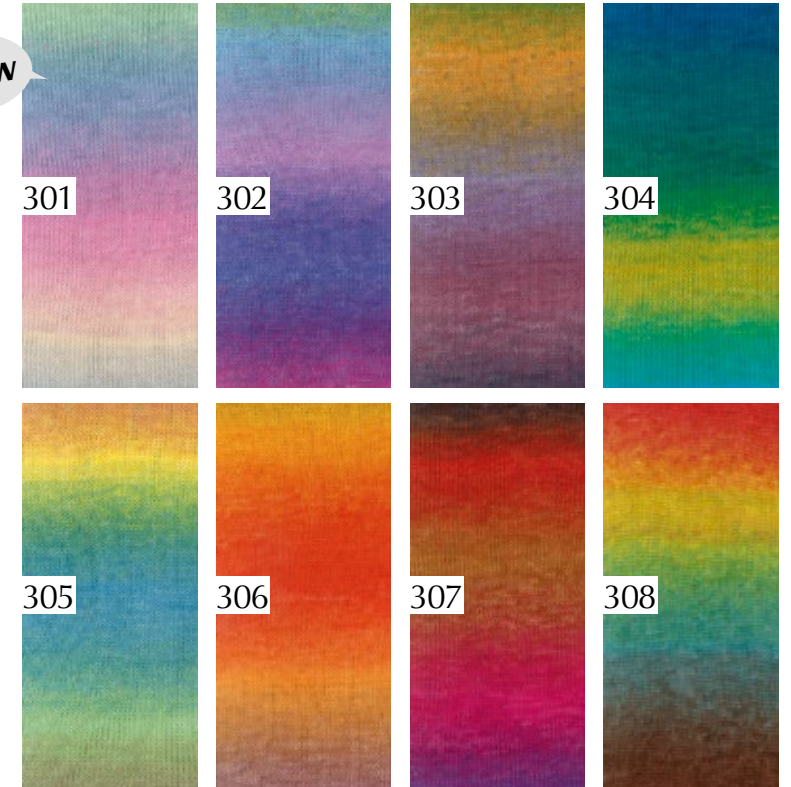


\* Nieuwe kleuren

## Gomitolo Aloha

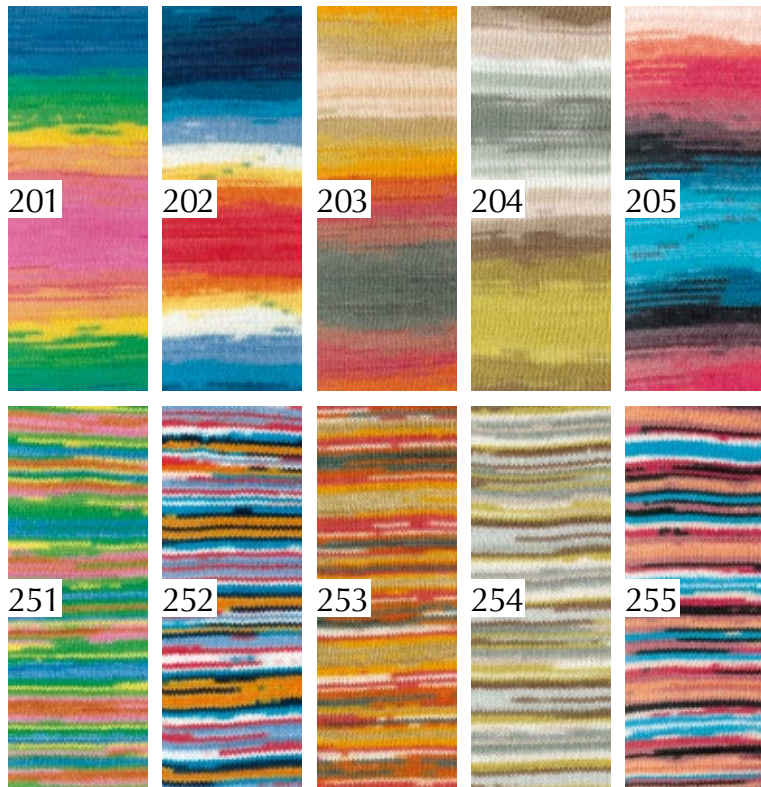
ca. 250 m / 100 g  
 X 4-4,5 mm  
 50 % katoen +  
 50 % viscose

**nieuw**



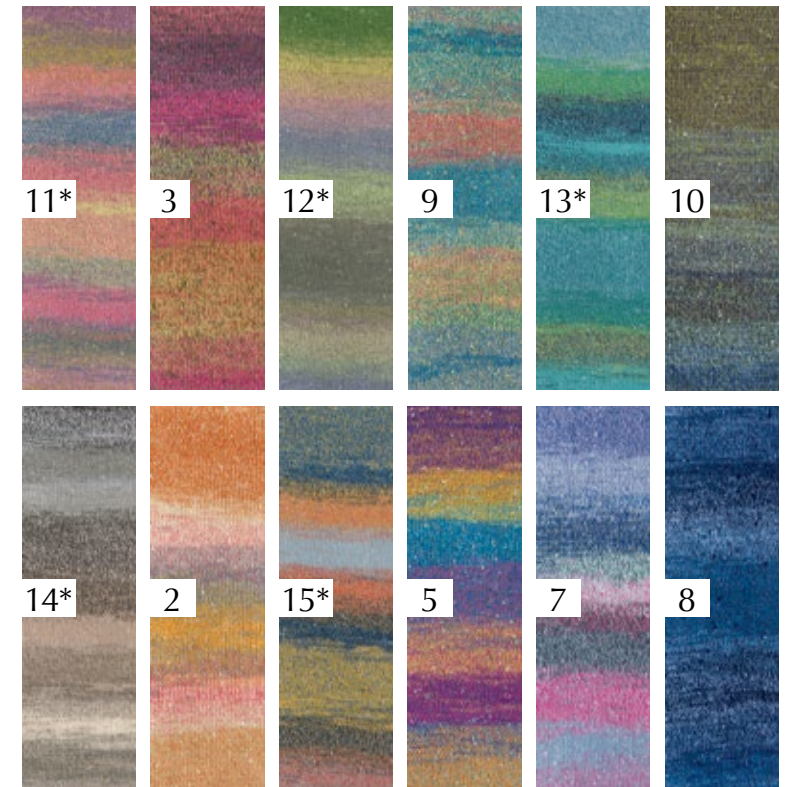
## Gomitolo Doppio

ca. 380 m / 100 g  
 X 4-5 mm  
 58 % viscose +  
 42 % katoen



## Gomitolo Summer Tweed

ca. 400 m / 100 g  
 X 3,5-4 mm  
 72 % katoen +  
 20 % viscose +  
 8 % polyamide



\* Nieuwe kleuren



WOOLPLACE  
BY LANA GROSSA



18  
GOMITOLO  
DENIM INCA

LANA GROSSA